

Wood is alive. Windows, sliding elements and front doors - with a wooden soul.



**Windows. Sliding
elements. Front
doors.**

**Wood+ Wood-
aluminum.**

Product overview.

**WOOD.
FULL IN
TREND!**

different, of course...

 **DÖPFNER**
FENSTER TÜREN UND MEHR

We are DÖPFNER.
Craftsmanship is our basis
Wood as a natural product is our material.
Sustainable thinking is in our DNA.
Since 1906.

Our family-run company produces windows, sliding systems and front doors with around 100 employees in Gerolzhofen, Franconia.

We specialize in timber and timber-aluminium constructions of the highest quality, unsurpassed durability and a huge variety of designs.

We are a modern industrial manufactory.

industry, because we naturally produce our components to industrial standards using modern CNC technology.

Manufactory, because the individual parts for each of our windows and front doors are not assembled by machines, but by the hands of highly trained specialists - since 1906.

This more than 115-year tradition of craftsmanship is our incentive to continue to develop industrial series production to achieve - or even surpass - the feel and quality of a handmade one-off.

We think and act sustainably.

Ecological responsibility for a sustainable future is not an empty phrase at Döpfner, but a corporate culture that is practiced every day. Our raw material is renewable wood - exclusively from controlled regional forestry.

We cover our electricity requirements with large photovoltaic systems and natural electricity. We generate CO₂-neutral heat from our wood waste.

This small brochure contains only a brief overview of our product range.

Further information
can be found
on our website
www.doepfner.de





**WOOD.
FULL IN
TREND!**



HOLZ VON HIER

Typical DÖPFNER. What actually makes our windows so special? Small details with a very big effect...

NATURALLY DIFFERENT - our slogan says it all: At DÖPFNER, we do things differently from the competition.

We always think and act as sustainably as possible. Environmental responsibility and Conserving resources determines our actions and our products.

For decades, we have also attached particular importance to a few small but very fine details that make our product portfolio stand out from the crowd both functionally and visually - and that you will notice every day. Through outstanding durability, optimum function and a particularly high-quality appearance.

Further information
on our website



 DÖPFNER



INDEPENDENT
KNOWLEDGE
CREATIVE
TESTED!

Further information
on our website



The first windows with ECO footprint certificate

Our natural raw material wood comes from local, certified sustainable forestry. As a matter of principle, we do not use wood species from deforestation (e.g. meranti)!



Dry glazing instead of sticky silicone joints

We only use high-quality, extremely durable and maintenance-free seals for glass installation. We do not use silicone glazing!



Further information
on our website



Exterior ultra-weatherproof **DIAMOND** surfaces

Surface technology at the highest level. Hard and yet permanently elastic. Extremely weather-resistant and therefore with incomparable durability.

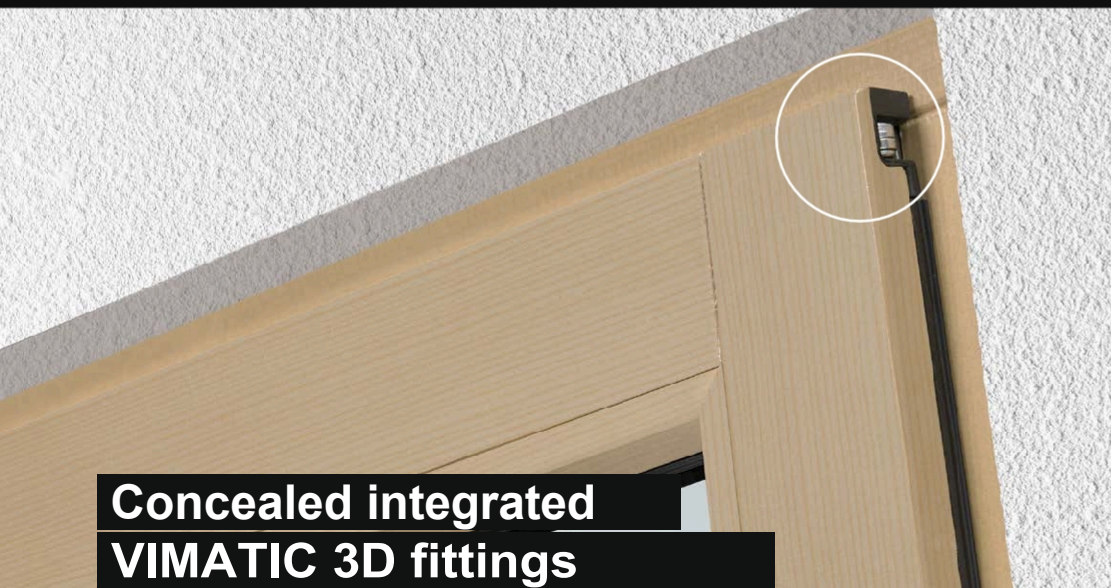


Further information
on our website



Maximum natural interior **NATIVA** surfaces

Maximum natural surfaces with a beautiful matt look. Durable and dirt-repellent. For a warm, healthy ambience!



Concealed integrated **VIMATIC 3D fittings**

Our concealed integrated VIMATIC 3D hinges are invisibly integrated from the front, creating a very tidy appearance. The opening angle of 180° and extensive adjustment options are further advantages.



Very complex **Welded aluminum shells**

Aluminum shells are usually simply cut to a 45° mitre and fitted together. At DÖPFNER, all aluminum shells are made to measure. Elaborately welded, sanded and only then powder-coated to a very high standard.

WOOD

WINDOW SYSTEMS.



WOOD
FULL IN
TREND!

Timber windows. System variants.

DÖPFNER HOLZ CLASSIC SYSTEM

DÖPFNER WOOD 68



Wood 68
with new rain rail variant in the installation depth 68 mm.

DÖPFNER WOOD 78



Wood 78
with rain rail variant with a construction depth of 78 mm.

DÖPFNER WOOD 88



Wood 88
with new rain rail variant in the installation depth 88 mm.

VARIANT PROFILED

DÖPFNER PROFILED



With Classic profiling on the inside and outside - in 68 mm installation depth. Also available in installation depths of 78 and 88 mm.



WOOD CLASSIC PROFILED



WOOD STYLE 2 + STYLE 2 UPGRADE PROFILED

DÖPFNER WOOD STYLE SYSTEM

DÖPFNER STIL 2



Style window with grooved weatherboard in the installation depth 78 mm. Also available in installation depths of 68 and 88 mm.

DÖPFNER STIL 2 UPGRADE



Period window with integrated historical authentic weatherboard on the sash in the installation depth 78 mm. Also available in installation depths of 68 and 88 mm.

DÖPFNER HYBRID SYSTEM

DÖPFNER PROTECT 68



PROTECT 68
The innovative wooden window with aluminum shell on the window sash in 68 mm installation depth

DÖPFNER PROTECT 78



PROTECT 78
The innovative wooden window with aluminum shell on the window sash with a construction depth of 78 mm

DÖPFNER PROTECT 88



PROTECT 88
The innovative wooden window with aluminum shell on the window sash with a construction depth of 88 mm



Holz Classic window systems.

- System strengths
- Technical details.

68
MM

78
MM

88
MM

Döpfner timber window systems are available in three system thicknesses (depending on the system).

The choice of system thickness depends on the glass thickness and the resulting U_g value of the glazing.

WOOD SASH GLAZING



WOOD FIXED GLAZING



MODERN, MAINTENANCE-FREE DRY GLAZING INSTEAD OF STICKY SILICONE JOINTS

- + Completely without silicone
Silicone cannot be painted over
Silicone yellows, becomes sticky and attracts dirt
- + Easy glass replacement possible
- + Durable, elastic and dirt-repellent No annoying streaks
- + when cleaning glass Can be repainted without any problems
- +

TWO HIGH-QUALITY SEALING LEVELS AS STANDARD!

- + Seal on the inside of the room effectively prevents heat loss
- + Center seal for optimum driving rain tightness
- + Optimum thermal insulation
- + High-quality sealing material
- + Perfect permanent elasticity

ELEGANTLY INTEGRATED ALUMINUM RAIN GUARD RAIL

- + Permanently keeps out extreme driving rain

HIGHLY STABLE CONSTRUCTION MADE OF MULTILAYER GLUED WOODEN LAMELLAS

- + Construction depths 68 and 78 triple glued
- + Construction depth 88 fourfold glued

EXTREMELY DURABLE, DIAMOND WOOD SURFACES

- + DIAMOND FINISH 2K surface system
- + Unrivaled durability and high weather resistance
Withstands sun, rain and ice for decades
- + Many surface colors available - from translucent to opaque in many RAL/NCS colors

The wooden window. Back in fashion!

Classic wood.

Open view from the inside

Further information
on our website

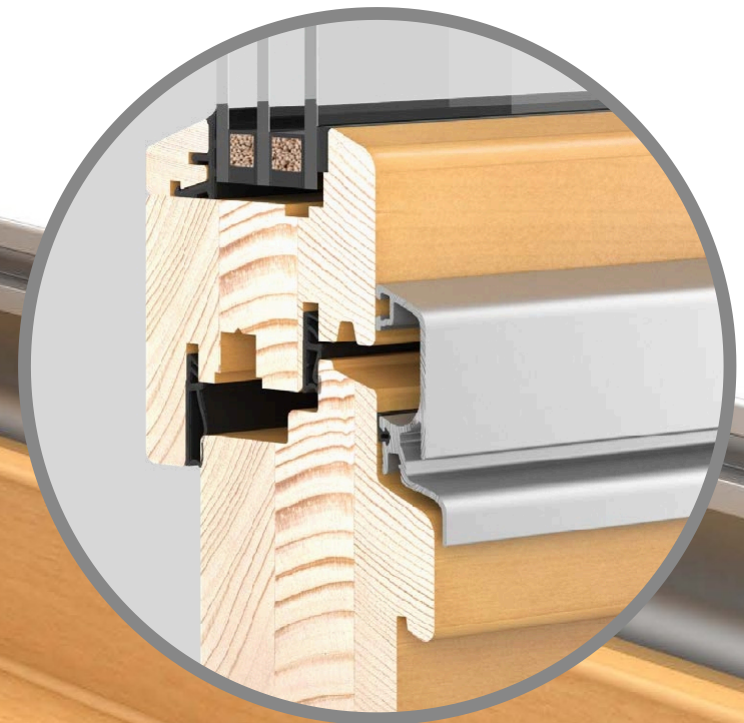


The wooden window - a timeless classic.

It all began with WOOD windows. Wooden windows were the first windows in the history of mankind - and also at Döpfner. And there are many reasons why we - apart from the optional addition of aluminum components - in over 100 years of company history. Döpfner HOLZ windows are sustainable, naturally homely, visually very versatile and durable.

The current Döpfner HOLZ window has been optimized with every generation.

The modern state of timber window technology is more durable and energy-efficient than ever before. And very versatile - from modern to classic.



The hybrid wood window.

Wood Protect.

Open view from the inside

Further information
on our website

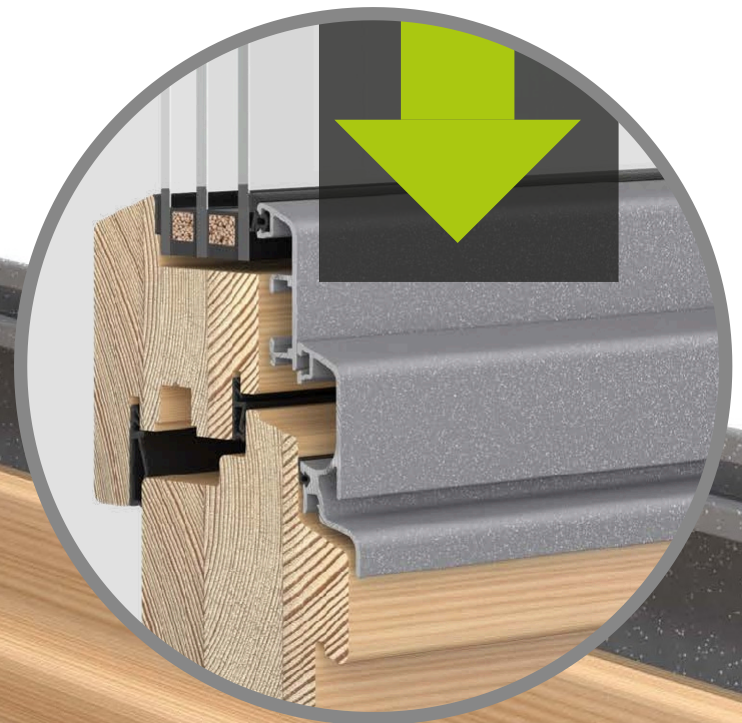


The wooden window with aluminum sash shell.

PROTECT stands for protection.

Exactly where it counts!

The sash of a window is exposed to far greater loads from the effects of weather than the frame. This is why the window sash in the PROTECT system has an aluminum shell, which raises durability, freedom from maintenance, energy efficiency and visual diversity to the high level of our HOLZ-ALUMINIUM systems.



Wooden windows for old buildings. **Wood style 2.** The window for energy-efficient renovations.

Further information
on our website



DÖPFNER STIL 2 WITH WEATHERBOARD ON THE WING

■ Ideal for energy-efficient renovation of old buildings ■ Elaborately crafted

Our STIL 2 window system is equipped with a **weather bar that** is grooved slightly downwards on the sash.



Wooden windows for listed building projects.

Wood style 2 upgrade.

Historically authentic and stylish.

Further information
on our website



DÖPFNER STYLE 2 UPGRADE

WITH WEATHERBOARD DIRECTLY ON THE GLASS

- Historically authentic
 - Ideal for listed building applications
- Complex craftsmanship

The upgrade of our STIL 2 window now has a newly designed **WEATHER VANE BASED ON A HISTORICAL MODEL**, which is integrated into the sash and starts **DIRECTLY AT THE GLASS LEVEL**.

WOOD.ALU.

WINDOW SYSTEMS.



Wood-aluminum windows. Premium. System variants.

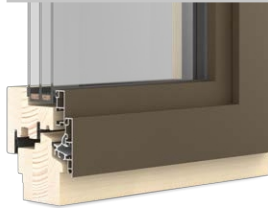
DÖPFNER PREMIUM OFFSET

PREMIUM SLIM 1



Offset aluminum construction with beveled aluminum profiles.
Edge radius 2 mm.

PREMIUM SLIM 3



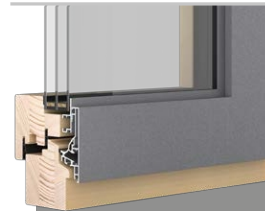
Offset aluminum construction with 90° edges on sash and frame shell.

PREMIUM CONTUR 3 color



Offset aluminum construction with stepped glass look. Corner joints of the sash shell not welded.

PREMIUM INTEGRA 2.0 color



Offset aluminum construction with integrated sash. Corner joints of the sash shell not welded.

DÖPFNER PREMIUM FLUSH-MOUNTED

PREMIUM CONTUR 2



Flush aluminum construction with 90° frame and sash shell and all-round shadow gap.

Wood-aluminum windows. Econ. System variants.

DÖPFNER ECON SURFACE OFFSET

ECON SLIM 1

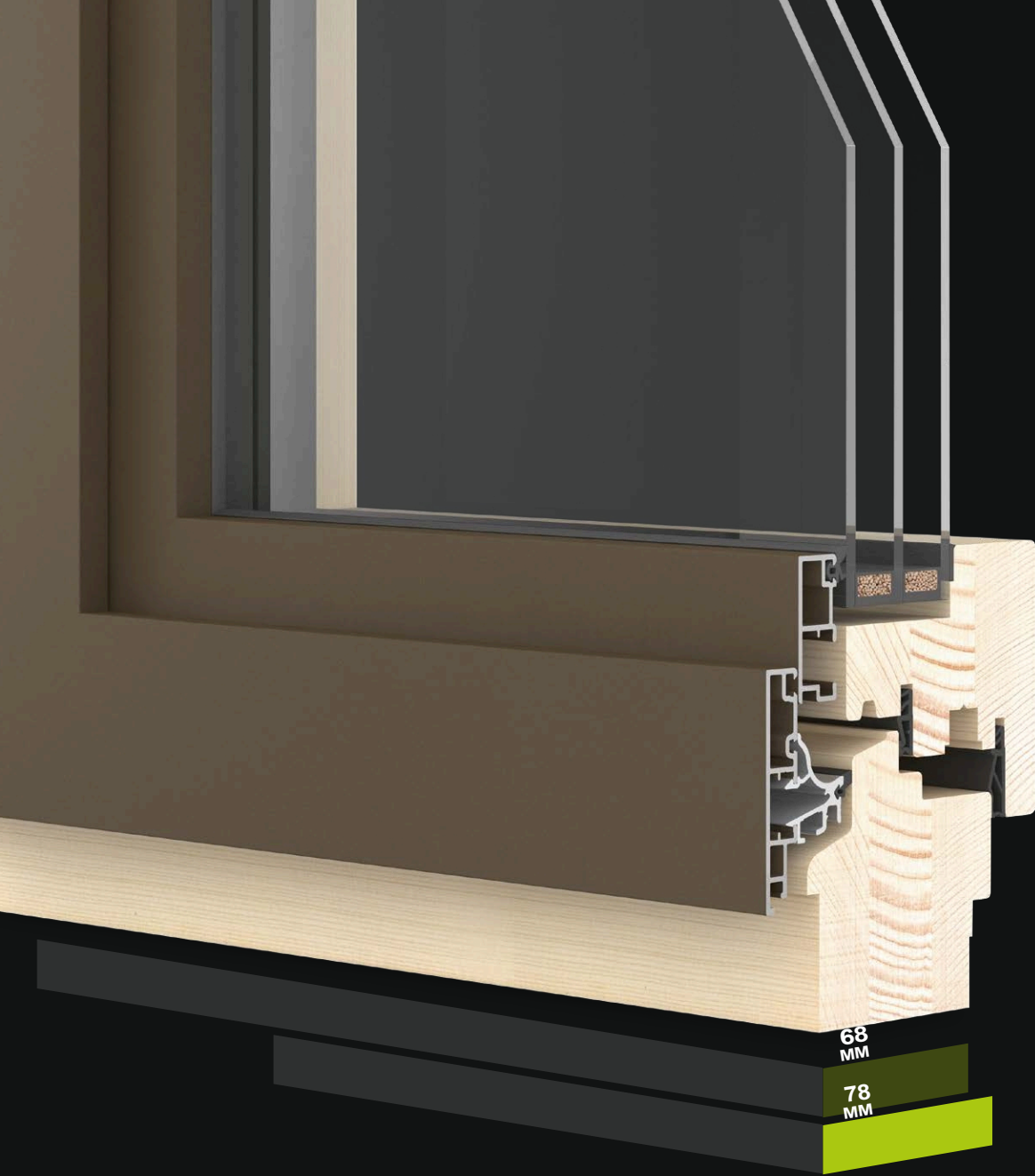


Surface offset Aluminum construction with beveled aluminum profiles.
Edge radius 2 mm.

ECON SLIM 3



Surface offset Aluminum construction with 90° edges on sash and frame shell.



Wood-aluminum window systems. **PREMIUM.**

- System strengths
- Aluminum profile variants
- Interior profile variants
- Technical details.

68
MM

78
MM

Döpfner wood-aluminum window systems are available in two system thicknesses (depending on the system).

The choice of system thickness depends on the glass thickness and the resulting U_g value of the glazing.

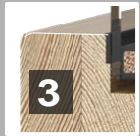


FOUR INTERIOR PROFILE VARIANTS

TYPE 1 Classic profiled



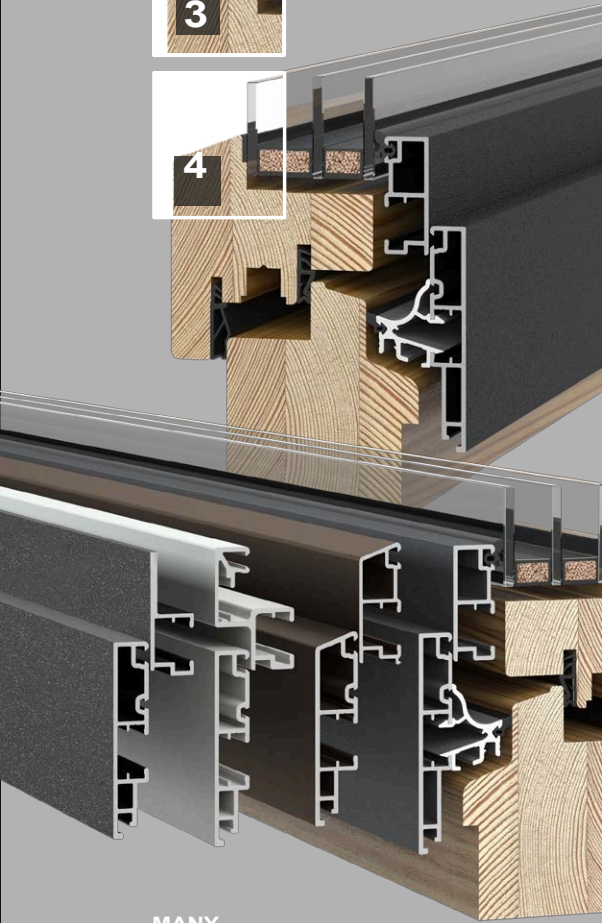
TYPE 2 Oblique rounded



TYPE 3 Cubic 90°



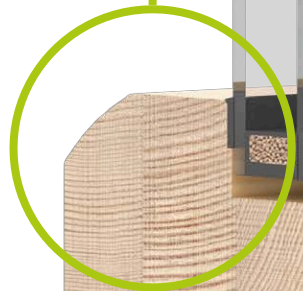
TYPE 4 Oblique



MANY ALUMINUM PROFILE VARIANTS AVAILABLE!

MODERN, MAINTENANCE-FREE DRY GLAZING INSTEAD OF STICKY SILICONE JOINTS

- + Completely without silicone
Silicone yellows, becomes sticky and attracts dirt
- + Easy glass replacement possible
- + Durable, elastic and dirt-repellent No annoying streaks when cleaning glass
- +



TWO HIGH-QUALITY SEALING LEVELS AS STANDARD!

- + Seal on the inside of the room effectively prevents heat loss
- + Center seal for optimum driving rain tightness
- + Optimum thermal insulation High-quality sealing material Perfect permanent elasticity
- +
- +
- +

HIGHLY STABLE CONSTRUCTION MADE OF MULTILAYER GLUED WOODEN LAMELLAS

- + Construction depths 68 and 78 triple glued
- + Construction depth 88 quadruple glued
- +

HIGH-QUALITY WELDED ALUMINUM SHELLS

DÖPFNER timber-aluminum window systems offer robust durability and a versatile look that adapts to any architectural style.

- + Highly weather-resistant PREMIUM powder coating
- + Large selection of colors
- + Many different profile variants
- + Elaborately welded corner joints instead of just plugged in. Seamlessly tight!

Wood-aluminum window system.

Premium.

Open view from the inside

Further information
on our website



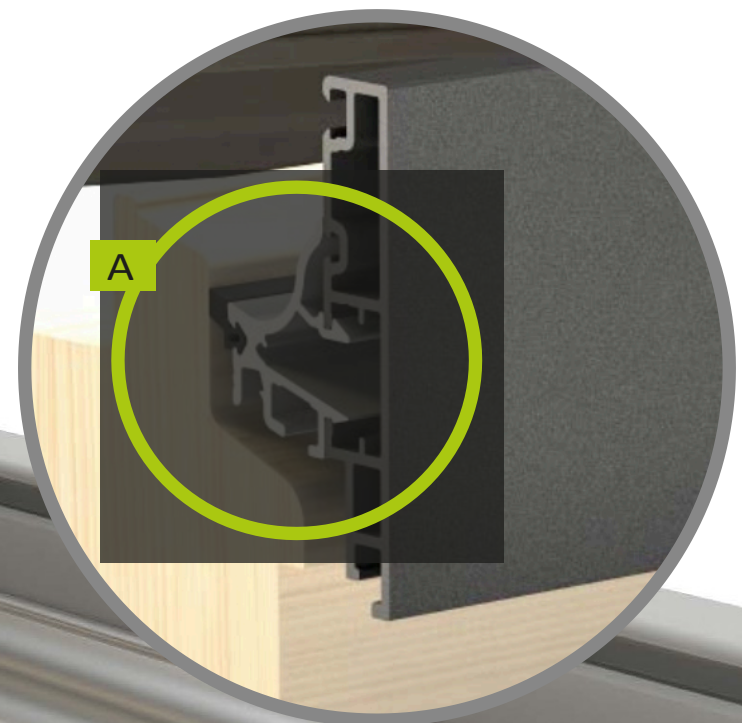
A PREMIUM rain bar

B Closed aluminum tray

PREMIUM is the perfect look. Outside and inside.

PREMIUM IS ADDED VALUE!

The new fully integrated PREMIUM rain rail with controlled drainage and the internally closed aluminum shell ensure a smooth, uncluttered look on the inside. The water drains downwards via Drainage slots in the rain rail



Wood-aluminum window system.

Econ.

Open view from the inside

Further information
on our website



The quality window with a savings effect.

The ECON price advantage (compared to our PREMIUM systems) results from the cheaper, internally open aluminum shell with visible weld seams from the inside.

With ECON systems, water does not drain away through an aluminum drainage rail, but directly via the angled edge of the frame profile. We make no compromises when it comes to the quality of the aluminum shells: As with the PREMIUM system, the ECON sash and frame shells are elaborately welded!



ECON

1

No integrated aluminum rain rail!

ECON SAVINGS EFFECT

2

Aluminum shell not closed on the inside!

ECON SAVINGS EFFECT

3

Insulating glass edge seal of the upper middle class: **SWISSPACER ADVANCE** instead of the **SWISSPACER ADVANCE** used in our PREMIUM system.

High-end version **SWISSPACER ULTIMATE**

ECON SAVINGS EFFECT

4

Visible double pot fittings The partially concealed **VIMATIC 3-D** integrated fitting of the PREMIUM systems is not available in the ECON system!

HST.

LIFT AND SLIDE SYSTEMS.

SKYWALL HST 4.0
WE BUILD WALLS OF LIGHT.

Combine lift and slide units, fixed glazing units and corner glazing units to create a window wall with a wow effect.

Discover the possibilities...

Further information
on our website



HST 4.0

Lift and slide systems.

SKYWALL HST 4.0 | HST 3.0 | HST 2.0

We build walls of light.

Further information
on our website



HST 3.0

LIFT AND SLIDE SYSTEM HST 3.0

Glass right down to the floor and completely barrier-free passageways.

Compared to SKYWALL, the HST 3.0 system is designed as a single element and offers an attractive design with slim, deep profiles.

The floor-to-ceiling fixed glazing and the zero-barrier thresholds are also integrated here.



HST 2.0

LIFT AND SLIDE SYSTEM HST 2.0

Even our standard lifting and sliding system has a lot to offer.

The high-quality, smooth-running mechanism is also installed here. Design and visual differences to HST 3.0 are:

No floor-to-ceiling fixed glazing and no zero-barrier thresholds (height offset 19 mm | 5 mm with Ecopass).

FRONT DOORS.

WOOD AND
WOOD ALUMINIUM

Front door systems.

Manufactured entrance doors. Handmade by DÖPFNER.

Anything but ordinary...

Further information
on our website



YOUR HOUSE. YOUR STYLE. YOUR INDIVIDUAL FRONT DOOR.

Choose from a large selection of different basic models. From classic to ultra-modern.

Our VS facing shell construction allows a wide variety of high-quality materials such as wood, reclaimed wood, mineral material, natural stone, aluminum - even in a material mix! Simply give free rein to your individuality. Choose surfaces, colors, handles, glass cut-outs ...

Of course, all modern convenience options such as automatic locking systems with keypad, fingerprint or transponder systems are also available.

Subject to color deviations due to printing! Original color samples are available from your local Döpfner dealer.

Döpfner Betriebs-GmbH+ Co. KG

Max-Planck-Straße 2 | D-97447 Gerolzhofen Phone +49

(0) 93 82-97 42-0

www.doepfner.de

 **DÖPFNER**
FENSTER TÜREN UND MEHR

